

CRANSTON

MACHINERY CO. INC.

Model 26A083

10 M.T. S.W.L. WEB-LATCH

***Reduce labor and time
with pneumatic release.***

***Unique design enhances
use with flat webbing slings.***

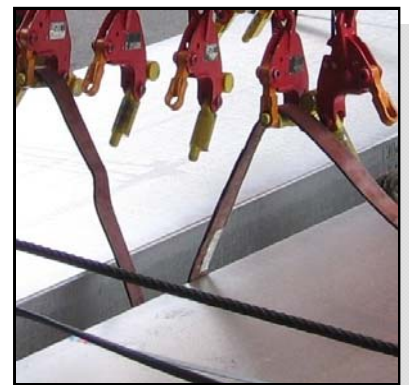
The Cranston WEB-LATCH is proven in the shipping industry for use with flat webbing slings up to 4 5/16" (110mm) wide, wire rope slings, flat strap, rope, multiple strand wire, steel rings, pins or eyes.

The Cranston WEB-LATCH is manually attached to the load and can be either remotely or manually unlocked. Remote unlocking is accomplished by delivery of a small amount of compressed air or gas to the WEB-LATCH internal pneumatic system. Manual unlocking is accomplished with operator activation of the release lever housed within the WEB-LATCH body.

By supporting the counter balanced load pin at both ends, the Cranston WEB-LATCH provides an extraordinary strength to weight ratio.



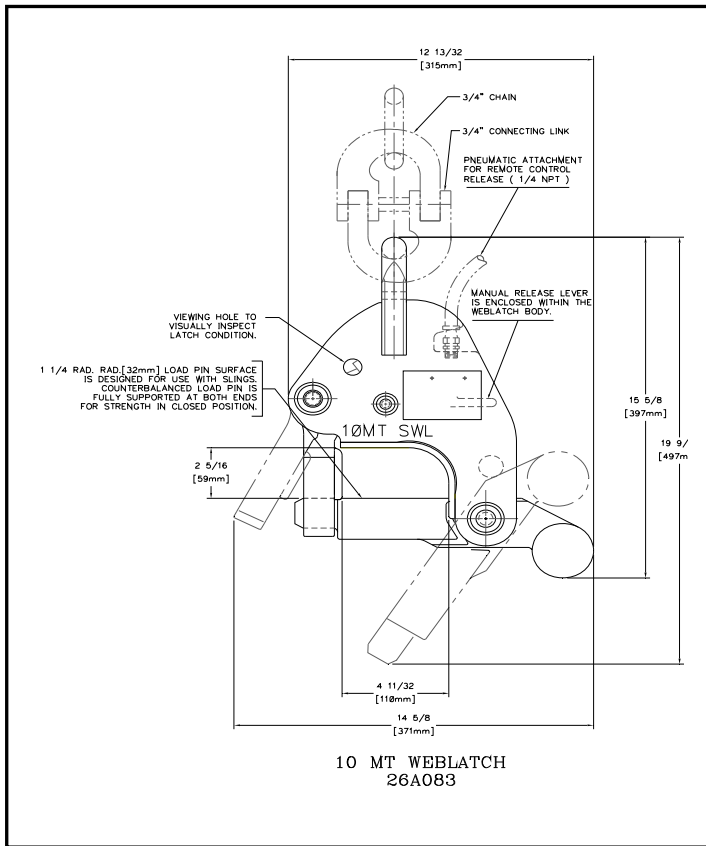
A Viewing hole allows visual inspection of the latch condition from either side of the Cranston WEB-LATCH



Features

- Large radius pin for superior web support.
- Large throat opens wide for easy loading and release.
- Simple to operate and maintain.
- Visible inspection of latch condition.
- Remote or Manual unlocking.
- Factory load tested and certified.
- Anti-corrosion finish.

WEB-LATCH



Requirements:

- Pneumatic: 0.5 cubic inch (.008 liter) @20 PSI (1.42 BAR) free air / cycle.

Specifications:

- Size: 15 5/8" (397mm) height x 12 13/32 (315mm) wide x 2 5/16" (75mm) thick.
- Weight: 31.5 lbs (14.3 kg)
- Throat width: 4 5/16" (110mm)
- Throat height: 2 5/16 (59mm)
- Safe working load: 22050 lbs (10 mt)
- Safety factor: 4 :1
- Finish: Sand blast preparation.
1 coat Primer.
2 coat Red, Orange and Yellow

Contact Cranston Machinery for a free copy of:

- Cranston's "Guidelines for cargo lifting with Cranston's WEB-LATCH", specification #CS006"
- Cranston's "WEB-LATCH operating instructions", Bulletin #L029.

Patents: USA 4,530,535, CANADA – 1,240,354

Alternate models



UNI-HOOK
3MT Swivel Cap
Model 26A087



WEB-LATCH
5MT
Model 26A081



UNI-LIFT
2MT
Model 26A069



Upgrade kits or Complete Custom
Designed Lifting Frames.



FOR FURTHER DETAILS CONTACT:

Cranston Machinery Co., Inc.

2251 SE Oak Grove Blvd., Oak Grove, OR. 97267

Phone: 503-654-7751 Fax: 503-654-6172

www.cranston-machinery.com

All products and services are covered by Cranston standard terms and conditions, including Limits of liability and warrantee effective at the time of sale. Available upon request.

Brochure # L026 090702