



Bulletin:	L029
10 MT - SWL	
Formatting updates:	07182023

WEBLATCH™ MODEL 26A083

Pneumatic Series

WEBLATCH™ OPERATING INSTRUCTIONS

INTRODUCTION:

The WEBLATCH™ is a serialized, rated capacity device. It is manually attached to the load and locked. It is released with pneumatic actuation or with a manual lever. When properly used and maintained, 20 P.S.I. (0.14 MPa) air pressure will release the hook latch.

IMPORTANT INSTRUCTIONS

Do:

Ascertain that WEBLATCH™ being used is correct for the cargo.*

Inspect for damage and correct operation before use.

Maintain operating air pressure at 20 P.S.I. (0.14 MPa)

Be sure that the latch is in locked position after attaching WEBLATCH™ to load.

Make sure WEBLATCH™ is used under straightline tension only.

Inspect every month (disassemble, inspect, clean, lubricate and reassemble).

Keep everyone clear of the load.

Do not:

Do not use WEBLATCH™ if damaged or inoperative.

Do not exceed safe working load (noted on the serial plate).

Do not actuate release when WEBLATCH™ is loaded.

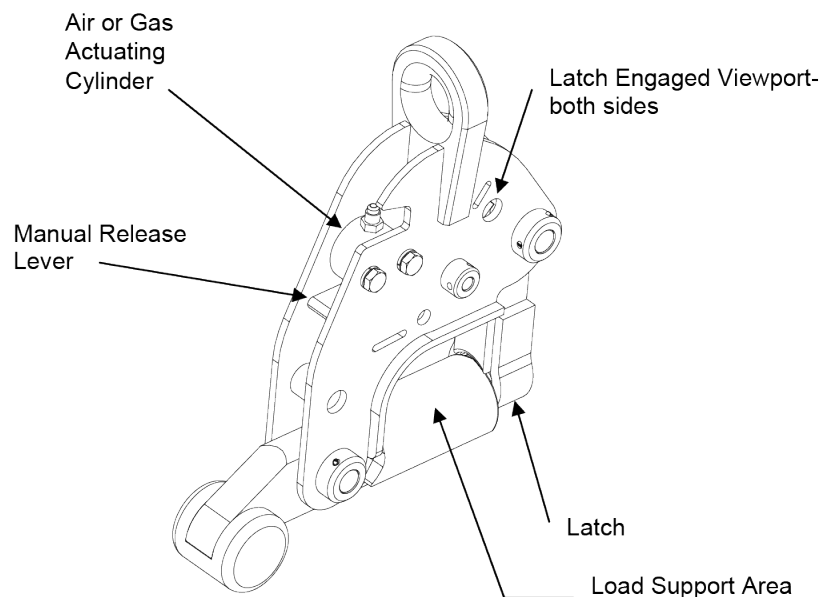
Do not attach WEBLATCH™ to load if hook is to be under side or twisting tension.

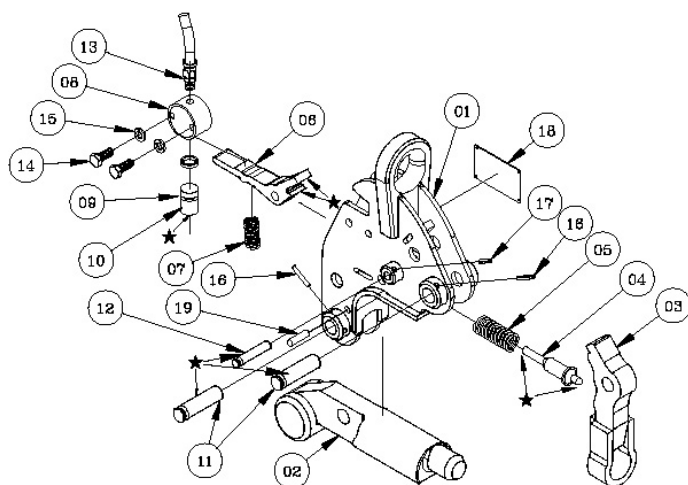
Do not operate with more than 40 P.S.I. (0.28MPa) air pressure.

Do not use WEBLATCH™ as a hammer or anvil.

Do not strike or force WEBLATCH™ with any hard object.

Do not allow anyone in the fall zone of the load.





Lubrication instructions

At the monthly inspections, lubricate the parts indicated by a black star on the drawing with AquaShield lithium based grease, grade 2, which seals out water and inhibits rust.

Item / Qty / Part No. / Description
01 1 DB5901000 Housing weldment
02 1 DB6990000 Main pin
03 1 DB5760000 Latch weldment
04 1 BA8427000 Push rod
05 1 M14000048 Compression spring
06 1 CB0576000 Pawl
07 1 AA7062000 Compression spring
08 1 BB1587000 Cylinder
09 1 M57000005 U-cup seal
10 1 AA7060000 Piston
11 2 BB7544000 Pin
12 1 BB5534000 Pin
13 1 M53100042 Male connector
14 2 ----- HHCS, m10 x 1.50 x 25mm lg.
15 2 ----- Lock washer, m10-std.
16 2 M69100053 Roll pin, 5 mm dia. X 30 mm lg.
17 1 M69100054 Roll pin, 5 mm dia. X 22 mm lg.
18 1 AA8212000 Serial plate
19 1 M69100083 Roll Pin, .5" dia X 1.75" lg.

Re-assembly Tip:

Install U cup seal, item 09, with legs upward.

Rigging

WEBLATCH™ units are designed for use in tandem applications (two point lifts), but can be used individually, where appropriate. See Cranston Machinery Specification CS 006 for proper application guidelines and use

Manufacturer’s certified statement of test.

The manufacture’s certification statement of test is supplied with each WEBLATCH™ shipment. Each unit is loaded to 2 times the design Safe Working Load in a certified loading apparatus.

Limited warranty. Cranston Machinery Co. Inc. (Cranston) warrants that each WEBLATCH™ manufactured by it will be free from defects in workmanship and material under normal usage and service for one year after the original sale thereof. If Cranston finds that any WEBLATCH™ is defective in workmanship or material under normal use and service, during the warranty period, Cranston will repair or replace the same, free of charge, F.O.B. Oak Grove, OR. The liability of Cranston with respect to any defective WEBLATCH™ is expressly limited to the repair and replacement thereof as set forth in this Limited Warranty. EXCEPT AS EXPRESSLY SET FORTH HEREIN, CRANSTON MAKES NO WARRANTIES AND THERE ARE NO WARRANTIES, EXPRESS OR IMPLIED, OF QUALITY, CAPACITY, FITNESS FOR ANY PURPOSE OR OTHERWISE, OF THE WEBLATCH™.

***Limitation of liability.** The conditions of use and maintenance of cargo handling gear is outside of Cranston Machinery control. The user, therefore, must evaluate each application under the conditions of his use and to the safety factor pertinent to his industry, to determine the safe application of Cranston Machinery Hooks for his work. Cranston will not be liable for any loss, expense or damages, including consequential damages, sustained by any buyer or user of the WEBLATCH™ by reason of any defect therein, or by reason of loss of business, profits, or time, or by reason of any interruption in or loss of use or failure in the performance of the WEBLATCH™, or by reason of damages to other individuals, entities, or property, notwithstanding the cause which gave rise to such loss, expense or damage.



This product is designed to 4X the Safe Working Load specified, based on the ultimate strength of the materials (the point at which materials fail). This meets or exceeds ANSI/AWS D14.1 Par. 5.1.1 and OSHA Rigging requirements. The user takes responsibility for meeting local regulations regarding the specification, periodic testing, and use of this product.

Note:

Cranston Machinery would be pleased to consider any special requirements you may have. We can design and manufacture special gear to suit your specific needs or customize equipment to allow desired groupings of hooks or other Cranston Machinery gear.

Simplify Maintenance Simplify Maintenance Simplify Maintenance Simplify Maintenance Simplify Maintenance Simplify Maintenance Simplify Maintenance Simplify Maintenance Simplify Maintenance Simplify Maintenance Simplify Maintenance Simplify Maintenance Simplify Maintenance Simplify Maintenance Simplify Maintenance
Raise Performance Raise Performance Raise Performance Raise Performance Raise Performance Raise Performance Raise Performance Raise Performance Raise Performance Raise Performance Raise Performance Raise Performance Raise Performance Raise Performance

Please visit us at: **cranston-machinery.com** | Our phone number is: **+ 001 (503) 654-7751**

Cranston Machinery Co. In. 2251 S.E. Oak Grove Blvd. Oak Grove, Oregon 97267